



## Local Publications:

\* PhD student involved

# Medical student involved

### 2020

- ◆ Berenyi, F., Steinfort, D., Abdelhamid, Y., Bailey, M., Pilcher, D., Bellomo, R., . . . Deane, A. (2020). Characteristics and Outcomes of Critically Ill Patients with Acute Exacerbation of Chronic Obstructive Pulmonary Disease in Australia and New Zealand. *Annals of the American Thoracic Society*, 17(6), 736-745. doi:10.1513/AnnalsATS.201911-821OC
- ◆ Chapple LS, Fetterplace K, Asrani V, Burrell A, Cheng A, Collins P, Doola R, Ferrie S, Marshall AP, Ridley EJ. *Nutrition management for critically and acutely unwell hospitalised patients with COVID-19 in Australia and New Zealand*. Aust Crit Care. Accepted 29 June 2020.
- ◆ Chapple LS, Fetterplace K, Ridley EJ. *Nutrition for critically ill patients with COVID-19*. ICU Management Practice 2020;20(1):52-57.
- ◆ Chapple LS, Gan M, Louis R, Yaxley A, Murphy A, Yandell R. *Nutrition-related outcomes and dietary intake in non-invasively mechanically ventilated critically ill adult patients: A pilot observational descriptive study*. Aust Crit Care 2020; 33(3):300-308.
- ◆ Chapple LS, Summers MJ, Weinel LM, Deane AM. *Outcome measures in critical care nutrition interventional trials: A systematic review*. Nutr Clin Practice (e-pub ahead of print DOI: <https://doi.org/10.1002/ncp.10478>).
- ◆ Deane A, Little L, Bellomo R, Chapman M, Davies A, Ferrie S, Horowitz M, Hurford S, Lange K, Litton E, Mackle D, O'Connor S, Parker J, Peake SL, Presneill J, Ridley E, Singh V, Van Haren F, Williams P, Young P; Iwashyna TJ on behalf of The TARGET Investigators and the Australian and New Zealand Intensive Care Society Clinical Trials Group. Outcomes six-months after 100% or 70% of enteral calorie requirements during critical illness (TARGET). A Randomised Controlled Trial. *Am J Respir Crit Care Med*. 2020;201(7):814-822. doi:10.1164/rccm.201909-1810OC
- ◆ Delaney, A., Finnis, M., Bellomo, R., Udy, A., Jones, D., Keijzers, G., . . . Peake, S. (2020). Initiation of vasopressor infusions via peripheral versus central access in patients with early septic shock: A retrospective cohort study. *Emergency Medicine Australasia*, 32(2), 210-219. doi:10.1111/1742-6723.13394
- ◆ Fetterplace K, Gill B, Chapple L, Presneill J, MacIsaac C, Deane A. *A systematic review with meta-analysis of patient-centered outcomes, comparing international guideline recommended enteral protein delivery to usual care*. JPEN 2020;44(4):610-620.
- ◆ Flabouris A, Civil IDS, Balogh Z, Isles S. The New Zealand Trauma System Verification. *J of Trauma and Acute Care Surgery* 2020:April. PMID: 32345895 DOI: 10.1097/TA.0000000000002774
- ◆ Lambell K, Tatucu-Babet OA, Chapple L, Gantner D, Ridley EJ. *Nutrition therapy in critical illness: A review of the literature for clinicians*. Crit Care 2020;24:35.
- ◆ Maiden, M., Finnis, M., Duke, G., Huning, E., Crozier, T., Nguyen, N., . . . Pilcher, D. (2020). Obstetric admissions to intensive care units in Australia and New Zealand: a registry-based cohort study. *BJOG: An International Journal of Obstetrics and Gynaecology*, 10 pages. doi:10.1111/1471-0528.16285





## ROYAL ADELAIDE HOSPITAL INTENSIVE CARE UNIT

- ◆ Mitchell, W. G., Deane, A., Brown, A., Bihari, S., Wong, H., Ramadoss, R., & Finnis, M. (2020). *Long term outcomes for Aboriginal and Torres Strait Islander Australians after hospital intensive care.* *Med J Aust*, 213(1), 16-21. doi:10.5694/mja2.50649
- ◆ \*selected as one of the top 10 articles of the year by the MJA Editorial Board, eligible for the MJA National Price for Excellence in Research Award
- ◆ Nadkarni, A., Alderson, S., Collett, L., Maiden, M., Reddi, B., Sundararajan, K. (2020). Impact of COVID-19 on an Australian Intensive Care Unit: lessons learned from South Australia. *Internal Medicine Journal* 1-4 doi:10.1111/imj.14963
- ◆ Ojha, M., Finnis, M., Heckelmann, M., Raith, E., Moodie, S., Chapman, M., . . . Maiden, M. (2020). Outcomes following grade V subarachnoid haemorrhage: *A single-centre retrospective study.* *Anaesthesia and Intensive Care*, 310057X20927033. doi:10.1177/0310057X20927033
- ◆ Ou L, Chen J, Hillman K, Flabouris A, Parr M, Green M. *The effectiveness of a standardised rapid response system on the reduction of cardiopulmonary arrests and other adverse events among emergency surgical admissions Resuscitation.* *Resuscitation.* 2020;150:162-169. doi.org/10.1016/j.resuscitation.2020.01.021
- ◆ Poole, A., Finnis, M., Anstey, J., Bellomo, R., Bihari, S., Biradar, V., . . . Deane, A. (2020). Study protocol and statistical analysis plan for the Liberal Glucose Control in Critically Ill Patients with Pre-existing Type 2 Diabetes (LUCID) trial. *Critical care and resuscitation : journal of the Australasian Academy of Critical Care Medicine*, 22(2), 133-141. Retrieved from <https://www.ncbi.nlm.nih.gov/pubmed/32389105>
- ◆ Reid AL, Chapman MJ, Peake SL, Bellomo R, Davies A, Deane AM, Horowitz M, Hurford S, Lange K, Little L, Mackle D, O'Connor S, Ridley E, Williams P, Young P. *Energy-dense vs routine enteral nutrition in New Zealand Europeans, Māori, and Pacific Peoples who are critically ill.* *N Z Med J.* 2020;133(1516):72-82. Published 2020 Jun 12.
- ◆ Thiele L, Flabouris A, Thompson C. *Acute clinical deterioration and consumer escalation in the hospital setting: A literature review.* *Resuscitation.* 2020 Aug 25:S0300-9572(20)30322-1. doi: 10.1016/j.resuscitation.2020.08.011
- ◆ Udy, A., Finnis, M., Jones, D., Delaney, A., Macdonald, S., Bellomo, R., & Peake, S. (2019). Incidence, patient characteristics, mode of drug delivery, and outcomes of septic shock patients treated with vasopressors in the ARISE trial. *Shock*, 52(4), 400-407. doi:10.1097/SHK.0000000000001281
- ◆ Weinel L, Summers M, Chapple L. *Ultrasonography to measure quadriceps muscle in critically ill patients: A literature review of reported methodologies.* 2019. *Anaes Intensive Care*;47(5):423-34.
- ◆ Weinel, L., Summers, M., Finnis, M., Poole, A., Kar, P., Chapman, M., . . . Ali Abdelhamid, Y. (2019). Are point-of-care measurements of glycated haemoglobin accurate in the critically ill?. *Australian Critical Care*, 32(6), 465-470. doi:10.1016/j.aucc.2018.11.064
- ◆ Yeo NYK, Reddi BAJ, Schultz CG, O'Connor S, Chapman MJ, Chapple LS. *Early anthropometry, strength and function in survivors of critical illness;* *Aust Crit Care*, Accepted 25 May 2020.

### 2019

- ◆ Albrich LH, Chapple LS, Nock A, Ridley EJ, Hickson M. Nutrition related symptoms in adult survivors of critical illness when eating orally: A scoping review protocol. *JBI*

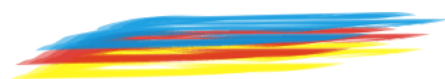




## ROYAL ADELAIDE HOSPITAL INTENSIVE CARE UNIT

Database Sys Review Implementation Reports 2019; (e-pub ahead of print DOI: 10.11124/JBISRIR-D-19-00128).

- ◆ Aung M, Raith E, Williams E, Burrell AJ. Severe meningococcal serogroup W sepsis presenting as myocarditis: A case report and review of literature. *J Intensive Care Soc.* 2019 May;20(2):182-186. doi: 10.1177/1751143718794127.
- ◆ Chapple LS, Weinel LM, Abdelhamid YA, Summers MJ, Nguyen T, Kar P, Lange K, Chapman MJ, Deane AM. Observed appetite and nutrient intake three months after ICU discharge. *Clin Nutr.* 2019 Jun;38(3):1215-1220. doi: 10.1016/j.clnu.2018.05.002.
- ◆ Chapple L, Weinel L, Ridley E, Jones D, Chapman M, Peake S. Clinical sequelae from overfeeding in enterally fed critically ill adults: Where is the evidence? *JPEN* 2019; (e-pub ahead of print DOI: <https://doi.org/10.1002/jpen.1740>).
- ◆ Crowhurst T, Lightfoot J, Yeo A, Reddi B, Nguyen P, Whitford H, Holmes-Liew CL. Case report of severe bronchial web-like stenoses after 'surviving the unsurvivable'. *BMC Pulm Med.* 2019 Jul 2;19(1):119. doi: 10.1186/s12890-019-0873-z.
- ◆ Deane AM, Chapman MJ, Abdelhamid YA. Any news from the prokinetic front? *Curr Opin Crit Care.* 2019 Aug;25(4):349-355. doi: 10.1097/MCC.0000000000000634.
- ◆ Deane AM, Chapman MJ, Reintam Blaser A, McClave SA, Emmanuel A. Pathophysiology and Treatment of Gastrointestinal Motility Disorders in the Acutely Ill. *Nutr Clin Pract.* 2019 Feb;34(1):23-36. doi: 10.1002/ncp.10199.
- ◆ Gluck S, Andrawos A, Finnis ME, Summers MJ, Goddard TP, Chapman MJ, Iwashyna J, Deane AM. Use of location data to evaluate participation following critical illness. *CCR.* 2019 [under review].
- ◆ Gluck S, Summers MJ, Finnis ME, Andrawos A, Goddard TP, Hodgson CL, Iwashyna TJ, Deane AM. An observational study investigating the use of patient-owned technology to quantify physical activity in survivors of critical illness. *Aust Crit Care.* 2019 Mar 14. pii: S1036-7314(18)30236-4. doi: 10.1016/j.aucc.2019.01.009.
- ◆ Kar P, Plummer MP, Ali Abdelhamid Y, Giersch EJ, Summers MJ, Weinel LM, Finnis ME, Phillips LK, Jones KL, Horowitz M, Deane AM. Incident Diabetes in Survivors of Critical Illness and Mechanisms Underlying Persistent Glucose Intolerance: A Prospective Cohort Study. *Crit Care Med.* 2019 Feb;47(2):e103-e111. doi: 10.1097/CCM.0000000000003524.
- ◆ Maiden MJ, Torpy DJ. Thyroid Hormones in Critical Illness. *Crit Care Clin.* 2019 Apr;35(2):375-388. doi: 10.1016/j.ccc.2018.11.012.
- ◆ O'Connell A, Flabouris A, Thompson C. Optimizing the response to acute clinical deterioration: the role of Observation and Response Charts. *Intern Med J.* 2019 Aug 6. doi: 10.1111/imj.14444.
- ◆ Peake SL, Chapman MJ; TARGET Investigators. Energy Dense versus routine enteral nutrition in the critically ill. *N Engl J Med.* 2019 Jan 31;380(5):499-500. doi: 10.1056/NEJMc1816396. PMID:30699311
- ◆ Poole, A., Anstey, J., Bellomo, R., Biradar, V., Deane, A., Finfer, S., . . . Eastwood, G. (2019). Opinions and practices of blood glucose control in critically ill patients with pre-existing type 2 diabetes in Australian and New Zealand intensive care units. *Australian Critical Care*, 32(5), 361-365. doi:10.1016/j.aucc.2018.09.001
- ◆ Rai S, Brown R, van Haren F, Neeman T, Rajamani A, Sundararajan K, Mitchell I. Long-term follow-up for Psychological stRes in Intensive CarE (PRICE) survivors: study protocol for a





## ROYAL ADELAIDE HOSPITAL INTENSIVE CARE UNIT

multicentre, prospective observational cohort study in Australian intensive care units. *BMJ Open*. 2019 Jan 25;9(1):e023310. doi: 10.1136/bmjopen-2018-023310.

- ◆ Reddi, B., Finnis, M., & Peake, S. (2019). Difficulties in knowing which critical care trial data warrant change in practice. *Medical Journal of Australia*, 211(7), 306-307.e1. doi:10.5694/mja2.50331
- ◆ Reddi, B., Johnston, S., Bart, S., Chan, J., & Finnis, M. (2019). Abnormal pulmonary function tests are associated with prolonged ventilation and risk of complications following elective cardiac surgery. *Anaesthesia and Intensive Care*, 47(6), 510-515. doi:10.1177/0310057X19877188
- ◆ Ridley E, Chapple LS, Chapman M. Nutrition intake in the post-intensive care unit hospitalization period. *Curr Opin Clin Nutr and Metabolic Care* 2019;43(1):88-95.
- ◆ Sundararajan K, O'Connell A, Thompson C, Flabouris A. Responding to Clinical Deterioration: Diurnal Variation in Afferent Limb Failure. *American Journal of Critical Care Medicine* 2019;199:
- ◆ Yandell R, Wang S, Bautz P, Shanks A, O'Connor S, Deane A, Lange K, Chapman MJ. A retrospective evaluation of nutrition support in critically ill patients with an open abdomen. *Aust Crit Care*. 2019 May;32(3):237-242. doi: 10.1016/j.aucc.2018.04.004.
- ◆ Yeo N, Terrett L, Gupta AK. Contemporary Management of Aneurysmal Subarachnoid Hemorrhage. A Literature Review. *J Neuroanaesthesiol Crit Care* 2019;6:131-139 Doi:10.1055/s-0039-1688898.

### **2018**

- ◆ Chapman M, Peake SL, Bellomo R, Davies A, Deane A, Horowitz M, Hurford S, Lange K, Little L, Mackle D, O'Connor S, Presneill J, Ridley E, Williams P, Young P; The TARGET Investigators on behalf of the Australia and New Zealand Intensive Care Society Clinical Trials Group. Energy-Dense versus Routine Enteral Nutrition in the Critically Ill. *N Engl J Med*. 2018 Nov 8;379(19):1823-1834. doi: 10.1056/NEJMoa1811687.
- ◆ Chapple LA, Chapman M, Shalit N, Udy A, Deane A, Williams L. Barriers to Nutrition Intervention for Patients With a Traumatic Brain Injury: Views and Attitudes of Medical and Nursing Practitioners in the Acute Care Setting. *JPEN J Parenter Enteral Nutr*. 2018 Feb;42(2):318-326.
- ◆ Chapple L, Deane A. From dysmotility to virulent pathogens: Implications of opioid use in the ICU. *Curr Opin Crit Care* 2018;24(2):118-123.
- ◆ Chapple L, Weinel L, Ali Abdelhamid Y, Summers M, Nguyen T, Kar P, Lange K, Chapman M, Deane A. Observed appetite and nutrient intake three months after ICU discharge. *Clin Nutr*. 2018 May 9. pii: S0261-5614(18)30174-2. doi: 10.1016/j.clnu.2018.05.002.
- ◆ Deane AM, Lamontagne F, Dukes GE, Neil D, Vasist Johnson L, Hacquoil K, Ou X, Richards D, Stelfox HT, Mehta S, Day AG, Chapman MJ, and Heyland DK. Nutritional adequacy therapeutic enhancement in the critically ill: A randomized double blind, placebo controlled trial of the motilin receptor agonist camicinal (GSK962040): The NUTRIATE Study. *J Parenter Enteral Nutr*. 2018 Jul;42(5):949-959. doi: 10.1002/jpen.1038.
- ◆ Deane AM, Peake SL, Chapman MJ. The disconnect between nutrition guidelines and evidence: How much protein should I prescribe to this critically ill patient? *Crit Care Resusc*. 2018 Mar;20(1):3-5.





## ROYAL ADELAIDE HOSPITAL INTENSIVE CARE UNIT

- ◆ Du YT, Kar P, Abdelhamid YA, Horowitz M, Deane AM. Glycated haemoglobin is increased in critically ill patients with stress hyperglycaemia: Implications for risk of diabetes in survivors of critical illness. *Diabetes Res Clin Pract.* 2018 Jan;135:73-75.
- ◆ Hermanides J, Plummer MP, Finnis M, Deane AM, Coles JP, Menon DK. Glycaemic control targets after traumatic brain injury: a systematic review and meta-analysis. *Crit Care.* 2018 Jan 19;22(1):11. doi: 10.1186/s13054-017-1883-y
- ◆ Hohl A, Zanela FA, Ghisi G, Ronsoni MF, Diaz AP, Schwarzbald ML, Dafre AL, Reddi B, Lin K, Pizzol FD, Walz R. Luteinizing Hormone and Testosterone Levels during Acute Phase of Severe Traumatic Brain Injury: Prognostic Implications for Adult Male Patients. *Front Endocrinol (Lausanne).* 2018 Feb 13;9:29.
- ◆ Lee HX, Hauser M, Jog S, Bautz P, Dobbins C. Non-operative management of isolated single abdominal stab wound: is it safe? 2018. *ANZ J Surg* 88:565-568.
- ◆ Maclure PT, Gluck S, Pearce A, Finnis ME. Patients retrieved to intensive care via a dedicated retrieval service do not have increased hospital mortality compared with propensity-matched controls. *Anaesth Intensive Care.* 2018 Mar;46(2):202-206.
- ◆ Maiden MJ, Finnis ME, Peake S, McRae S, Delaney A, Bailey M, Bellomo R. Haemoglobin concentration and volume of intravenous fluids in septic shock in the ARISE trial. *Crit Care* 2018 May;22(1):118.
- ◆ Mallat J, Reddi BJ. Do not abandon monitoring the central venous pressure during fluid resuscitation of septic shock patients. *Intensive Care Med.* 2018 Nov;44(11):2012-2013. doi: 10.1007/s00134-018-5387-2.
- ◆ Marty FM, Vidal-Puigserver J; Clark C, Gupta SK, Merino E, Garot D, Chapman MJ, Jacobs F, Rodriguez-Noriega E, Husa P, Shortino D, Watson HA, Yates PJ, Peppercorn A. Intravenous zanamivir or oral oseltamivir for hospitalised patients with influenza: an international, randomised, double-blind, double-dummy, phase III trial. *The Lancet Respiratory Medicine.* 2017 Feb;5(2):135-146.
- ◆ McCaffrey J, Maiden MJ, Norrish C. In-hospital cardiac arrests: events worth monitoring? *Crit Care Resusc.* 2018 Dec;20(4):320.
- ◆ Neuts A, Stessel B, Wouters PF, et al. Selective suprascapular and axillary nerve block versus interscalene plexus block for pain control after arthroscopic shoulder surgery: a noninferiority randomized parallel-controlled clinical trial. *Reg Anesth Pain Med.* 2018 Apr 14.
- ◆ Nguyen TAN, Ali Abdelhamid Y, Weinel LM, Hatzinikolas S, Kar P, Summers MJ, Phillips LK, Horowitz M, Jones KL, Deane AM. Postprandial hypotension in older survivors of critical illness. *Journal of Critical Care.* 2018 Jun; 45:20-26.
- ◆ Ou L, Chen J, Flabouris A, Hillman K, Parr M, Bellomo R. Hospital variability of postoperative sepsis and sepsis-related mortality after elective coronary artery bypass grafting surgery. *J Crit Care.* 2018 Oct;47:232-237. doi: 10.1016/j.jcrc.2018.07.018.
- ◆ Parry S, Chapple L, Mourtzakis M. Exploring the potential effectiveness of combining optimal nutrition with electrical stimulation to maintain muscle health in critical illness: A narrative review. *Nutr Clin Pract.* 2018 Dec;33(6):772-789. doi: 10.1002/ncp.10213.
- ◆ Plummer MP, Notkina N, Timofeev I, Hutchinson PJ, Finnis ME, Gupta AK. Cerebral metabolic effects of strict versus conventional glycaemic targets following severe traumatic brain injury. *Crit Care.* 2018 Jan 25;22(1):16. doi: 10.1186/s13054-017-1933-5.





## ROYAL ADELAIDE HOSPITAL INTENSIVE CARE UNIT

- ◆ Poole AP, Anstey J, Bellomo R, Biradar V, Deane AM, Finfer SR, Finnis ME, French CJ, Kar P, Kruger PS, Maiden MJ, Mårtensson J, McArthur CJ, McGuinness SP, Secombe PJ, Tobin AE, Udy AA, Eastwood GM. Opinions and practices of blood glucose control in critically ill patients with pre-existing type 2 diabetes in Australian and New Zealand intensive care units. *Aust Crit Care*. 2018 Oct 19. pii: S1036-7314(18)30129-2. doi: 10.1016/j.aucc.2018.09.001.
- ◆ Raith EP, Ihle JF, Jamieson J, Kalff A, Bosco J. Idiopathic systemic capillary leak syndrome presenting as septic shock: A case report. *Heart Lung*. 2018 Jul - Aug;47(4):425-428.
- ◆ Rajendran V, Sundararajan K, Sawka A. Aortocaval Fistula Presenting as Type 2 Acute Myocardial Infarction in a Patient with Severe Arteriopathy. *Indian J Crit Care Med*. 2018 May;22(5):372-374.
- ◆ Reddi B, Finnis M, Udy AA, Maiden M, Delaney A, Bellomo R, Peake S; ARISE Study Management Committee and the Australian and New Zealand Intensive Care Society Clinical Trials Group. The relationship between the change in central venous pressure and intravenous fluid volume in patients presenting to the emergency department with septic shock. *Intensive Care Med*. 2018 Sep;44(9):1591-1592. doi: 10.1007/s00134-018-5314-6
- ◆ Richmond KM, Warburton KG, Finney SJ, Shah S, Reddi BAJ. Routine CT scanning of patients retrieved to a tertiary centre on veno-venous extracorporeal membrane oxygenation: a retrospective risk benefit analysis. *Perfusion*. 2018 Sep;33(6):438-444. 1:267659118763266. doi: 10.1177/0267659118763266.
- ◆ Ridley ER, Peake SL, Jarvis M, Deane AM, Lange K, Davies AR, Chapman MJ, Heyland D. Nutrition therapy in Australia and New Zealand Intensive Care Units: An international comparison study. *J Parenter Enteral Nutr*. 2018 Nov;42(8):1349-1357. doi: 10.1002/jpen.1163.
- ◆ Sampson BG, Wilson SR, Finnis ME, Hodak AM, Jones PN, O'Connor SL, Chapman MJ. A Quality Control Study of the Adherence to Recommended Physiological Targets for the Management of Brain-Dead Organ Donors in South Australian Intensive Care Units. *Prog Transplant*. 2018 Dec;28(4):386-389. doi: 10.1177/1526924818800053.
- ◆ Sampson B, Wilson S, Finnis M, Jones P, Hodak A, O'Connor S, Chapman M. Physiological management of brain dead organ donors in South Australian Intensive Care Units. Accepted by *Progress In Transplantation* 2018.
- ◆ The TARGET investigators (with Chapman MJ co-chair and chief investigator) on behalf of the Australian and New Zealand Intensive Care Society Clinical Trials Group Statistical Analysis Plan for The Augmented versus Routine approach to Giving Energy Trial (TARGET). *Crit Care Resusc* 2018; 20 (1): 15-21.
- ◆ The TARGET investigators (with Chapman MJ co-chair and chief investigator) on behalf of the Australian and New Zealand Intensive Care Society Clinical Trials Group. Study Protocol for The Augmented versus Routine approach to Giving Energy Trial (TARGET). *Crit Care Resusc* 2018; 20 (1): 6-14.
- ◆ Tumlin JA, Murugan R, Deane AM, Ostermann M, Busse LW, Ham KR, Kashani K, Szerlip HM, Prowle JR, Bihorac A, Finkel KW, Zarbock A, Forni LG, Lynch SJ, Jensen J, Kroll S, Chawla LS, Tidmarsh GF, Bellomo R; Angiotensin II for the Treatment of High-Output Shock 3 (ATHOS-3) Investigators. *Crit Care Med*. 2018 Jun;46(6):949-957. doi: 10.1097/CCM.0000000000003092. PMID:29509568.
- ◆ Udy AA, Finnis M, Jones D, Delaney A, Macdonald S, Bellomo R, Peake S; ARISE Investigators. Incidence, Patient Characteristics, Mode of Drug Delivery, and Outcomes of





## ROYAL ADELAIDE HOSPITAL INTENSIVE CARE UNIT

Septic Shock Patients Treated with Vasopressors in the Arise Trial. *Shock*. 2018 Oct 30. doi: 10.1097/SHK.0000000000001281.

- ◆ Yandell R, Chapman MJ, O'Connor S, Shanks A, Lange K and Deane AM. Postpyloric feeding tube placement in critically ill patients: Extending the scope of practice for Australian dietitians. *Nutr Diet*. 2018 Feb;75(1):30-34.
- ◆ Yandell R, Wang S, Bautz P, Shanks A, O'Connor S, Deane A, Lange K, Chapman M. A retrospective evaluation of nutrition support in relation to clinical outcomes in critically ill patients with an open abdomen. *Aust Crit Care*. 2018 Jun 11. pii: S1036-7314(17)30318-1. doi: 10.1016/j.aucc.2018.04.004.
- ◆ Young PJ, Bellomo R, Chapman MJ, Deane AM, Peake SL. What should we target after TARGET? *Crit Care Resusc*. 2018 Dec;20(4):252-253. PMID: 30482131
- ◆ Weinel LM, Summers MJ, Finnis ME, Poole A, Kar P, Chapman MJ, Deane AM, Ali Abdelhamid Y. Are point-of-care measurements of glycated haemoglobin accurate in the critically ill? *Aust Crit Care*. 2018 Dec 24. pii: S1036-7314(18)30237-6. doi: 10.1016/j.aucc.2018.11.064.

### 2017

- ◆ \*Ali Abdelhamid Y, Plummer MP, Finnis ME, Biradar V, Bihari S, Kar P, Moodie S, Horowitz M, Shaw JE, Phillips LK, Deane AM. Long-term mortality of critically ill patients with diabetes who survive admission to the intensive care unit. *Critical Care Resuscitation*. 2017 Dec;19(4):303-309. [\[PubMed\]](#)
- ◆ Alhazzani W, Guyatt G, Alshahrani M, Deane AM, Marshall JC, Hall R, Muscedere J, English SW, Lauzier F, Thabane L, Arabi YM, Karachi T, Rochwerg B, Finfer S, Daneman N, Alshamsi F, Zytaruk N, Heel-Ansdell D, Cook D; Canadian Critical Care Trials Group. Withholding Pantoprazole for Stress Ulcer Prophylaxis in Critically Ill Patients: A Pilot Randomized Clinical Trial and Meta-Analysis. *Crit Care Med*. 2017 Apr 27 [\[PubMed\]](#)
- ◆ Arabi YM, Casaer MP, Chapman M, Heyland DK, Ichai C, Marik PE, Martindale RG, McClave SA, Preiser JC, Reignier J et al: The intensive care medicine research agenda in nutrition and metabolism. *Intensive Care Med* 2017 Sep;43(9):1239-1256
- ◆ \*Chapple LS, Deane AM, Williams LT, Strickland R, Schultz C, Lange K, Heyland DK, Chapman MJ. Longitudinal changes in anthropometrics and impact on self-reported physical function after traumatic brain injury. *Critical Care and Resuscitation*. 2017 Mar;19(1):29-36. [\[PubMed\]](#)
- ◆ \*Chapple LS, Deane AM, Lange K, Kranz AJ, Williams LT, Chapman MJ. Weekend days are not required to accurately measure oral intake in hospitalised patients. *Journal of Human Nutrition and Dietetics*. 2017 Jun;30(3):378-384. [\[PubMed\]](#)
- ◆ Davies ML, Chapple LS, Chapman MJ, Moran JL, Peake SL. Protein delivery and clinical outcomes in the critically ill: a systematic review and meta-analysis. *Critical Care Resuscitation*. 2017 Jun;19(2):117-127. [\[PubMed\]](#)
- ◆ Du YT, Kar P, Abdelhamid YA, Horowitz M, Deane AM. Glycated haemoglobin is increased in critically ill patients with stress hyperglycaemia: Implications for risk of diabetes in survivors of critical illness. *Diabetes Research and Clinical Practice*. 2017 Nov 11;135:73-75. [\[PubMed\]](#)
- ◆ Deane AM, Hodgson CL, Young P, Little L, Singh V, Poole A, Young M, Mackle D, Lange K, Williams P, Peake SL, Chapman MJ, Iwashyna TJ. The rapid and accurate





## ROYAL ADELAIDE HOSPITAL INTENSIVE CARE UNIT

categorisation of critically ill patients (RACE) to identify outcomes of interest for longitudinal studies: a feasibility study. *Anaesthesia and Intensive Care*. 2017 Jul;45(4):476-484. [\[PubMed\]](#)

- ◆ Flabouris A, Mesecke M. Rapid response team calls that overlap in time: incidence, consequences and patient outcomes. *Crit Care Resusc*. 2017 Sep;19(3):214-221. [\[PubMed\]](#)
- ◆ \*Gluck S, Summers MJ, Goddard TP, Andrawos A, Smith NC, Lange K, Iwashyna TJ, Deane AM. Wide Disagreement Between Alternative Assessments of Premorbid Physical Activity: Subjective Patient and Surrogate Reports and Objective Smartphone Data. *Critical Care Medicine*. 2017 Oct;45(10):e1036-e104. [\[PubMed\]](#)
- ◆ \*Gluck S, Chapple LS, Chapman MJ, Iwashyna TJ, Deane AM. A scoping review of use of wearable devices to evaluate outcomes in survivors of critical illness. *Critical Care Resuscitation*. 2017 Sep;19(3):197-204. [\[PubMed\]](#)
- ◆ \*Kar P, Jones KL, Plummer MP, Ali Abdelhamid Y, Giersch EJ, Summers MJ, Hatzinikolas S, Heller S, Horowitz M, Deane AM. Antecedent Hypoglycemia Does Not Attenuate the Acceleration of Gastric Emptying by Hypoglycemia. *Journal of Clinical Endocrinology and Metabolism*. 2017 Nov 1;102(11):3953-3960. [\[PubMed\]](#)
- ◆ Marty FM, Vidal-Puigserver J, Clark C, Gupta SK, Merino E, Garot D, Chapman MJ, Jacobs F, Rodriguez-Noriega E, Husa P, Shortino D, Watson HA, Yates PJ, Peppercorn AF. Intravenous zanamivir or oral oseltamivir for hospitalised patients with influenza: an international, randomised, double-blind, double-dummy, phase 3 trial. *The Lancet Respiratory Medicine*. 2017 Feb;5(2):135-146 [\[PubMed\]](#)
- ◆ Miller A, Deane AM, Plummer MP, Cousins CE, Chapple LS, Horowitz M, Chapman MJ. Exogenous glucagon-like peptide-1 attenuates glucose absorption and reduces blood glucose concentration after small intestinal glucose delivery in critical illness. *Critical Care and Resuscitation*. 2017 Mar;19(1):37-42. [\[PubMed\]](#)
- ◆ #Nguyen TA, Abdelhamid YA, Phillips LK, Chapple LS, Horowitz M, Jones KL, Deane AM. Nutrient stimulation of mesenteric blood flow - implications for older critically ill patients. *World Journal of Critical Care Medicine*. 2017 Feb 4;6(1):28-36 [\[PubMed\]](#)
- ◆ Ovenden C, Plummer MP, Selvanderan S, Donaldson TA, Nguyen NQ, Weinel LM, Finnis ME, Summers MJ, Ali Abdelhamid Y, Chapman MJ, Rayner CK, Deane AM. Occult upper gastrointestinal mucosal abnormalities in critically ill patients. *Acta Anaesthesiologica Scandinavica*. 2017 Feb;61(2):216-223 [\[PubMed\]](#)
- ◆ Ou L, Chen J, Hillman K, Flabouris A, Parr M, Assareh H, Bellomo R. The impact of post-operative sepsis on mortality after hospital discharge among elective surgical patients: a population-based cohort study. *Crit Care*. 2017 Feb 20;21(1):34. [\[PubMed\]](#)
- ◆ Petersen Tym MK, Ludbrook GL, Flabouris A, Seglenieks R, Painter TW. Developing models to predict early postoperative patient deterioration and adverse events. *ANZ J Surg*. 2017 Jun;87(6):457-461. [\[PubMed\]](#)
- ◆ Reintam Blaser A, Starkopf J, Alhazzani W, Berger MM, Casaer MP, Deane AM, Fruhwald S, Hiesmayr M, Ichai C, Jakob SM et al: Early enteral nutrition in critically ill patients: ESICM clinical practice guidelines. *ICM* 2017, 43(3):380-398. [\[PubMed\]](#)
- ◆ Sarada PP, Sundararajan K. The devil is in the detail: Acute Guillain-Barré syndrome camouflaged as neurosarcoidosis in a critically ill patient admitted to an Intensive Care Unit. *Indian J Crit Care Med*. 2016 Apr;20(4):238-41. [\[PubMed\]](#)







## ROYAL ADELAIDE HOSPITAL INTENSIVE CARE UNIT

- ◆ Schoeman T, Sundararajan K, Micik S, Sarada P, Edwards S, Poole A, Chapman M. The impact on new-onset stress and PTSD in relatives of critically ill patients explored by diaries study (The “INSPIRED” study). *Aust Crit Care*. 2017 Dec 15. pii: S1036-7314(17)30263-1. doi: 10.1016/j.aucc.2017.11.002
- ◆ Stevens NE, Chapman MJ, Fraser CK, Kuchel TR, Hayball JD, Diener KR: Therapeutic targeting of HMGB1 during experimental sepsis modulates the inflammatory cytokine profile to one associated with improved clinical outcomes. *Scientific Reports* 2017, 7(1):5850. [\[PubMed\]](#)
- ◆ Sun EW, de Fontgalland D, Rabbitt P, Hollington P, Sposato L, Due SL, Wattchow DA, Rayner CK, Deane AM, Young RL, Keating DJ. Mechanisms Controlling Glucose-Induced GLP-1 Secretion in Human Small Intestine. *Diabetes*. 2017 Aug;66(8):2144-2149. [\[PubMed\]](#)
- ◆ Sundararajan K, Schoeman T, Hughes L, Edwards S, Reddi B. Predictors and outcomes of acute pancreatitis in critically ill patients presenting to the emergency department of a tertiary referral centre in Australia. *Emergency Medicine Australasia*. 2017 Apr;29(2):184-191. [\[PubMed\]](#)
- ◆ Sundararajan K, Roberts-Thomson RL, Nelson AJ, Psaltis PJ. Therapeutic paradox: nimodipine attenuates severe coronary spasm following coronary artery graft surgery in a high-risk vasoplegic cancer patient. *Intern Med J*. 2017 Feb;47(2):229-231 [\[PubMed\]](#)
- ◆ Yandell R, Chapman MJ, O'Connor S, Shanks A, Lange K and Deane AM. Postpyloric feeding tube placement in critically ill patients: Extending the scope of practice for Australian dietitians. *Nutrition & Dietetics*. 2017 July. [\[Wiley Online Library\]](#)

### **2016**

- ◆ Assareh H, Chen J, Ou L, Hillman K, Flabouris A. Incidences and variations of hospital acquired venous thromboembolism in Australian hospitals: a population-based study. *BMC Health Serv Res*. 2016 Sep 22;16(1):511. [\[PubMed\]](#)
- ◆ \*Ali Abdelhamid Y, Chapman MJ, Deane AM. Peri-operative nutrition. *Anaesthesia*. 2016 Jan;71 Suppl 1:9-18. [\[PubMed\]](#)
- ◆ \*Ali Abdelhamid Y, Phillips L, Horowitz M, Deane A. Survivors of intensive care with type 2 diabetes and the effect of shared care follow-up clinics: study protocol for the SWEET-AS randomised controlled feasibility study. *Pilot Feasibility Study*. 2016 Oct 13;2:62 [\[PubMed\]](#)
- ◆ \*Ali Abdelhamid Y, Kar P, Finnis ME, Phillips LK, Plummer MP, Shaw JE, Horowitz M, Deane AM. Stress hyperglycaemia in critically ill patients and the subsequent risk of diabetes: a systematic review and meta-analysis. *Critical Care*. 2016 Sep 27;20(1):301. [\[PubMed\]](#)
- ◆ Anstey M, O'Callaghan G. Choices, consequences and cost: low-value treatments and intensive care medicine. *Crit Care Resusc*. 2016 Mar;18(1):5-7. [\[PubMed\]](#)
- ◆ Chalwin R, Flabouris A, Kapitola K, Dewick L. Perceptions of interactions between staff members calling, and those responding to, rapid response team activations for patient deterioration. *Aust Health Rev*. 2016 Sep;40(4):364-370. [\[PubMed\]](#)





## ROYAL ADELAIDE HOSPITAL INTENSIVE CARE UNIT

- ◆ Chapman MJ, Deane AM, O'Connor SL, Nguyen NQ, Fraser RJ, Richards DB, et al. The effect of camicinal (GSK962040), a motilin agonist, on gastric emptying and glucose absorption in feed-intolerant critically ill patients: a randomized, blinded, placebo-controlled, clinical trial. *Critical care (London, England)*. 2016;20(1):232. [\[PubMed\]](#)
- ◆ \*Chapple LS, Deane AM, Heyland DK, Lange K, Kranz AJ, Williams LT, et al. Energy and protein deficits throughout hospitalization in patients admitted with a traumatic brain injury. *Clinical nutrition*. 2016; 35(6):1315-1322. [\[PubMed\]](#)
- ◆ \*Chapple LS, Chapman MJ, Lange K, Deane AM, Heyland DK. Nutrition support practices in critically ill head-injured patients: A global perspective. *Crit Care*. 2016 Jan 7;20:6. [\[PubMed\]](#)
- ◆ Chen J, Ou L, Flabouris A, Hillman K, Bellomo R, Parr M. Impact of a standardized rapid response system on outcomes in a large healthcare jurisdiction. *Resuscitation*. 2016 Oct;107:47-56. [\[PubMed\]](#)
- ◆ Declercq B, Deane AM, Wang M, Chapman MJ, Heyland DK. The enhanced protein-energy provision via the enteral route feeding (PEPuP) in critically ill surgical patients: A multicentre prospective evaluation. *Anaesth Intensive Care*. 2016 Jan;44(1):93-8 [\[PubMed\]](#)
- ◆ Di Muzio F, Presello B, Glassford NJ, Tsuji IY, Eastwood GM, Deane AM, Ekinici EI, Bellomo R, Mårtensson J. Liberal Versus Conventional Glucose Targets in Critically Ill Diabetic Patients: An Exploratory Safety Cohort Assessment. *Critical Care Medicine*. 2016 Sep;44(9):1683-91 [\[PubMed\]](#)
- ◆ Horowitz M, Wu T, Deane AM, Jones KJ, Rayner CK. DPP-4 inhibition and the known unknown. *Diabetes*. 2016 Aug;65(8):2124-6 [\[PubMed\]](#)
- ◆ Iwashyna TJ, Deane AM. Individualizing Endpoints in Randomized Clinical Trials to Better Inform Individual Patient Care: the TARGET Proposal. *Crit Care*. 2016 Aug 3;20(1):218. [\[PubMed\]](#)
- ◆ \*Kar P, Plummer MP, Chapman MJ, Cousins CE, Lange K, Horowitz M, Jones KL, Deane AM. Energy-Dense Formulae May Slow Gastric Emptying in the Critically Ill. *JPEN Journal of Parenteral and Enteral Nutrition*. 2016 Sep;40(7):1050-6. [\[PubMed\]](#)
- ◆ \*Kar P, Plummer MP, Bellomo R, Jenkins AJ, Januszewski AS, Chapman MJ, et al. Liberal Glycemic Control in Critically Ill Patients With Type 2 Diabetes: An Exploratory Study. *Critical care medicine*. 2016;44(9):1695-703. [\[PubMed\]](#)
- ◆ #Liew VY, Chapman MJ, Nguyen NQ, Cousins CE, Plummer MP, Chapple LA, Abdelhamid YA, Manton ND, Swalling A, Sutton-Smith P, Burt AD, Deane AM. A prospective observational study of the effect of critical illness on ultrastructural and microscopic morphology of duodenal mucosa. *Critical Care Resuscitation*. 2016 Jun;18(2):102-8. [\[PubMed\]](#)
- ◆ Luethi N, Cioccarl L, Tanaka A, Kar P, Giersch E, Deane AM, Mårtensson J, Bellomo R. Glycated Hemoglobin A1c Levels Are Not Affected by Critical Illness. *Critical Care Medicine*. 2016 Sep;44(9):1692-4 [\[PubMed\]](#)
- ◆ Maiden MJ, Otto S, Brealey JK, Finnis ME, Chapman MJ, Kuchel TR, Nash CH, Edwards J, Bellomo R. Structure and Function of the Kidney in Septic Shock. A





## ROYAL ADELAIDE HOSPITAL INTENSIVE CARE UNIT

Prospective Controlled Experimental Study. *American Journal of Respiratory and Critical Care Medicine*. 2016 Sep 15;194(6):692-700 [\[PubMed\]](#)

- ◆ Maiden MJ, Chapman MJ, Torpy DJ, Kuchel TR, Clarke IJ, Nash CH, Ludbrook GL. Tri-iodothyronine (T3) replacement with and without hydrocortisone in a model of septic shock. A randomised, blinded, placebo-controlled trial. *Crit Care Med*. 2016 Jun;44(6):1153-60 [\[PubMed\]](#)
- ◆ Maiden MJ, Otto S, Brealey JK, Finnis ME, Chapman MJ, Kuchel TR, Nash CH, Edwards J, Bellomo R. Structure and Function of the Kidney in Septic Shock: A Prospective Controlled Experimental Study. *American Journal Respir Crit Care Med* 2016 Mar;194(6):692-700. [\[PubMed\]](#)
- ◆ Maiden MJ, Chapman MJ, Torpy DJ, Kuchel TR, Clarke IJ, Nash CH, Fraser JD, Ludbrook GL. Triiodothyronine Administration in a Model of Septic Shock: A Randomized Blinded Placebo-Controlled Trial. *Crit Care Med* 2016 Jun;44(6):1153-1160. [\[PubMed\]](#)
- ◆ O'Connell A, Flabouris A, Kim SW, Horwood C, Hakendorf P, Thompson CH. A newly-designed observation and response chart's effect upon adverse inpatient outcomes and rapid response team activity. *Intern Med J*. 2016 Jun 1. [\[PubMed\]](#)
- ◆ Ou L, Chen J, Burrell T, Flabouris A, Hillman K, Bellomo R, Parr M. Incidence and mortality of postoperative sepsis in New South Wales, Australia, 2002-2009. *Crit Care Resusc*. 2016 Mar;18(1):9-16 [\[PubMed\]](#)
- ◆ Parikh HG, Miller A, Chapman M, Moran JL, Peake SL. Calorie delivery and clinical outcomes in the critically ill: a systematic review and metaanalysis. *Crit Care Resusc*. 2016 Mar;18(1): 17-24. [\[PubMed\]](#)
- ◆ \*Plummer MP, Deane AM. Dysglycemia and glucose control during sepsis. *Clin Chest Med*. 2016 Jun;37(2):309-19 [\[PubMed\]](#)
- ◆ \*Plummer MP, Finnis ME, Phillips LK, Kar P, Bihari S, Biradar V, Moodie S, Horowitz M, Shaw JE, Deane AM. Stress Induced Hyperglycemia and the Subsequent Risk of Type 2 Diabetes in Survivors of Critical Illness. *PLoS One*. 2016 Nov 8;11(11):e0165923. [\[PubMed\]](#)
- ◆ \*Plummer MP, Finnis ME, Horsfall M, Ly M, Kar P, Abdelhamid YA, Deane AM. Prior exposure to hyperglycaemia attenuates the relationship between glycaemic variability during critical illness and mortality. *Critical Care and Resuscitation*. 2016 Sep;18(3):189-97. [\[PubMed\]](#)
- ◆ \*Plummer MP, Kar P, Cousins CE, Lange K, Chapman MJ, Nauck MA, Horowitz M, Meier JJ, Deane AM. The insulinotropic effect of pulsatile compared with continuous intravenous delivery of GLP-1. *Diabetologia*. 2016 May;59(5):966-9. [\[PubMed\]](#)
- ◆ \*Plummer MP, Kar P, Cousins CE, Hausken T, Lange K, Chapman MJ, et al. Critical Illness Is Associated With Impaired Gallbladder Emptying as Assessed by 3D Ultrasound. *Critical care medicine*. 2016;44(9):e790-6. [\[PubMed\]](#)
- ◆ Pooja PS, Sundararajan K. The devil is in the detail: Acute Guillain-Barré syndrome camouflaged as neurosarcoidosis in a critically ill patient admitted to an Intensive Care Unit. *Indian Journal of Critical Care Medicine* 2016;20(4):238-241. [\[PubMed\]](#)





## ROYAL ADELAIDE HOSPITAL INTENSIVE CARE UNIT

- ◆ Pryor L, Ward E, Cornwell P, O'Connor S, Chapman M. Clinical indicators associated with successful tracheostomy cuff deflation Australian Critical Care. *Aust Crit Care*. 2016 Aug;29(3):132-7. [\[PubMed\]](#)
- ◆ Pryor L, Baldwin C, Ward E, Cornwell P, O'Connor S, Chapman M, Bersten A. Tracheostomy tube type and inner cannula selection impacts pressure and resistance to airflow. *Respir Care*. 2016 May;61(5):607-14. [\[PubMed\]](#)
- ◆ Reid DB, Costello LS, O'Connor SN, Bellomo R, Buhr H, Chapman MJ, Davies AR, Eastwood GM, Ferrie S, Lange K, McIntyre J, Needham DM, Peake SL, Rai S, Ridley EJ, Rodgers H, Deane AM. The effect of augmenting early nutritional energy delivery on quality of life and employment status one year after ICU admission. *Anaesth Intensive Care*. 2016 May;44(3):406-12 [\[PubMed\]](#)
- ◆ #Selvanderan SP, Summers MJ, Finnis ME, Plummer MP, Ali Abdelhamid Y, Anderson MB, Chapman MJ, Rayner CK, Deane AM. Pantoprazole or Placebo for Stress Ulcer Prophylaxis (POP-UP): Randomized Double-Blind Exploratory Study. *Critical Care Medicine*. 2016 Oct;44(10):1842-50 [\[PubMed\]](#)
- ◆ Summers MJ, Chapple LA, McClave SA, Deane AM. Event-rate and delta inflation when evaluating mortality as a primary outcome from randomized controlled trials of nutritional interventions during critical illness: a systematic review. *American Journal of Clinical Nutrition*. 2016 Apr;103(4):1083-90. [\[PubMed\]](#)
- ◆ Summers MJ, Chapple LS, McClave SA, Deane AM. Event-rate and delta inflation when evaluating mortality as a primary outcome from randomized controlled trials of nutritional interventions during critical illness: A systematic review. *Am J Clin Nutr*. 2016 Apr;103(4):1083-90 [\[PubMed\]](#)
- ◆ Sundararajan K, Flabouris A, Thompson C. Diurnal variation in the performance of rapid response systems: the role of critical care services—a review article. *J Intensive Care* 2016 Feb 24;4:15. [\[PubMed\]](#)
- ◆ Sundararajan K, Flabouris A, Thompson C, Seppelt I; George Institute of Global Health and the Australian and New Zealand Intensive Care Society Clinical Trials Group Point Prevalence study Investigators. Elderly patients are at high risk of night-time admission to the intensive care unit following a rapid response team call. *Intern Med J*. 2016 Dec;46(12):1440-1442.
- ◆ Sundararajan K, Flabouris A, Thompson C, Seppelt I; George Institute of Global Health and the Australian and New Zealand Intensive Care Society Clinical Trials Group Point Prevalence Study Investigators. Hospital overnight and evaluation of systems and timelines study: A point prevalence study of practice in Australia and New Zealand. *Resuscitation* 2016 Mar;100:1-5.1. [\[PubMed\]](#)

### **2015**

- ◆ \*Ali Abdelhamid Y, Cousins CE, Sim JA, Bellon MS, Nguyen NQ, Horowitz M, Chapman MJ, Deane AM. Effect of critical illness on triglyceride absorption. *JPEN J Parenter Enteral Nutr*. 2015 Nov;39(8):966-72. *Epub 2014 Jun*. [\[PubMed\]](#)
- ◆ Bihari S, Maiden M, Deane A, Fuchs R, Fraser J, Bersten AD, Bellomo R. Preclinical research in critical care - the Australasian perspective. *Crit Care Resusc*. 2015 Sep;17(3):151-2 [\[PubMed\]](#)





## ROYAL ADELAIDE HOSPITAL INTENSIVE CARE UNIT

- ◆ Bihari S, Maiden M, Deane A, Fuchs R, Fraser J, Bersten AD, Bellomo R. Preclinical research in critical care - the Australasian perspective. *Crit Care Resusc.* 2015 Sep;17(3):151-2. [\[PubMed\]](#)
- ◆ Chapman MJ, Peake SL, Jones D. Gluttony in the ICU: is it really a deadly sin? *Crit Care Resusc.* 2015 Jun;17(2):63-4 [\[PubMed\]](#)
- ◆ Chen J, Bellomo R, Flabouris A, Hillman K, Assareh H, Ou L. Delayed Emergency Team Calls and Associated Hospital Mortality: A Multicenter Study. *Crit Care Med.* 2015 Oct; [\[PubMed\]](#)
- ◆ Dafoe S, Edwards S, Chapman MJ, Stiller K. Overcoming barriers to the mobilization of patients in an intensive care unit. *Anaesth Intensive Care.* 2015 Nov;43(6):719-27 [\[PubMed\]](#)
- ◆ Deane AM, Guyatt GH. Trials on stress ulcer prophylaxis: finding the balance between benefit and harm. Response to Krag et al. *Intensive Care Med.* 2015 Jul;41(7):1369. *Epub* 2015 Jun [\[PubMed\]](#)
- ◆ Flabouris A, Nandal S, Vater L, Flabouris K, O'Connell A, Thompson C. Multi-Tiered Observation and Response Charts: Prevalence and Incidence of Triggers, Modifications and Calls, to Acutely Deteriorating Adult Patients. *PLoS One.* 2015 Dec 30;10(12):e0145339. *eCollection* 2015 [\[PubMed\]](#)
- ◆ \*Gluck S, Headdon WG, Tang DW, Bastian IV, Goggin MJ, Deane AM. The incidence of ocular candidiasis and evaluation of routine ophthalmic examination in critically ill patients with candidaemia. *Anaesth Intensive Care.* 2015 Nov;43(6):693-7 [\[PubMed\]](#)
- ◆ \*Kar P, Jones KL, Horowitz M, Deane AM. Management of critically ill patients with type 2 diabetes: the need for personalised therapy. *World J Diabetes.* 2015 Jun 10;6(5):693-706 [\[PubMed\]](#)
- ◆ \*Kar P, Jones KL, Horowitz M, Chapman MJ, Deane AM. Measurement of gastric emptying in the critically ill. *Clin Nutr.* 2015 Aug;34(4):557-64. *Epub* 2014 Nov [\[PubMed\]](#)
- ◆ \*Kar P, Cousins CE, Annink CE, Jones KL, Chapman MJ, Meier JJ, Nauck MA, Horowitz M, Deane AM. Effects of glucose-dependent insulinotropic polypeptide on gastric emptying, glycaemia and insulinaemia during critical illness: a prospective, double blind, randomised, crossover study. *Critical Care.* 2015 Jan 23;19:20 [\[PubMed\]](#)
- ◆ \*Kar P, Plummer MP, Bellomo R, Jenkins AJ, Januszewski AS, Lange K, Chapman MJ, Horowitz M, and Deane AM. Personalised glucose therapy: glucose targets in critically ill patients with pre-existing poorly controlled type 2 diabetes. *Intensive Care Med Exp.* 2015 Dec; 3(Suppl 1): A290. [\[PubMed\]](#)
- ◆ Li CK, Sundararajan K. An Uncommon Case of Phenibut Toxicity in an Intensive Care Unit. *International Journal of Medical and Pharmaceutical Case Reports* 2015;5(5):1-6. [\[Science Domain\]](#)
- ◆ Poole A, Deane A, Summers M, Fletcher J, Chapman M: The relationship between fasting plasma citrulline concentration and small intestinal function in the critically ill. *Crit Care* 2015, 19:16. [\[PubMed\]](#)





## ROYAL ADELAIDE HOSPITAL INTENSIVE CARE UNIT

- ◆ Pryor LN, Ward EC, Cornwell PL, O'Connor SN, Finnis ME, Chapman MJ. Impact of nasogastric tubes on swallowing physiology in older, healthy subjects: A randomized controlled crossover trial. *Clin Nutr.* 2015 Aug;34(4):572-8. [\[PubMed\]](#)
- ◆ \*Plummer MP, Jones KL, Cousins CE, Trahair LG, Meier JJ, Chapman MJ, Horowitz M, Deane AM. Hyperglycemia potentiates the slowing of gastric emptying induced by exogenous GLP-1. *Diabetes Care.* 2015 Jun;38(6):1123-9. [\[PubMed\]](#)
- ◆ Reddi BA, Iannella SM, O'Connor SN, Deane AM, Willoughby SR, Wilson DP. Attenuated platelet aggregation in patients with septic shock is independent from the activity state of myosin light chain phosphorylation or a reduction in Rho kinase-dependent inhibition of myosin light chain phosphatase. *Intensive Care Med Exp.* 2015 Dec;3(1):37. [\[PubMed\]](#)
- ◆ Reintam Blaser A, Starkopf L, Deane AM, Poeze M, Starkopf J. Comparison of different definitions of feeding intolerance: a retrospective observational study. *Clin Nutr.* 2015 Oct;34(5):956-61. Epub 2014 Oct [\[PubMed\]](#)
- ◆ Ridley ER, Davies AR, Hodgson C, Deane AM, Bailey M, Cooper DJ. Full predicted energy from nutrition and the effect on mortality and infectious complications in critically ill adults: A protocol for a systematic review and meta-analysis of parallel randomised controlled trials. *Syst Rev.* 2015 Dec 12;4:179 [\[PubMed\]](#)
- ◆ Secombe P, Harley S, Chapman M, Aromataris E. Feeding the critically ill obese patient: a systematic review protocol. *JBIC Database System Rev Implement Rep.* 2015 Oct;13(10):95-109 [\[PubMed\]](#)
- ◆ Sundararajan K. Role of case reports in anaesthesia and critical care. *Journal of Anaesthesia and Critical Care Case Reports* 2015 Oct-Dec;1(2):3-4. [\[Journal of Anaes & CC\]](#)
- ◆ Sundararajan K, Milne D, Edwards S, Chapman MJ, Shakib S. Anti-seizure prophylaxis in critically ill patients with traumatic brain injury in an intensive care unit. *Anaesth Intensive Care.* 2015 Sep;43(5):646-51 [\[PubMed\]](#)
- ◆ \*Trahair LG, Horowitz M, Stevens JE, Feinle-Bisset C, Standfield S, Piscitelli D, Rayner CK, Deane AM, Jones KL. Effects of exogenous glucagon like peptide-1 on blood pressure, heart rate, gastric emptying, mesenteric blood flow and glycaemic responses to oral glucose in older individuals with normal glucose tolerance or type 2 diabetes. *Diabetologia.* 2015 Aug;58(8):1769-78 Epub 2015 Jun [\[PubMed\]](#)

### **2014**

- ◆ \*Abdelhamid YA, Cousins CE, Sim JA, Bellon MS, Nguyen NQ, Horowitz M, Chapman MJ, Deane AM 2014, 'Effect of critical illness on triglyceride absorption.' *Journal of Parenteral and Enteral Nutrition* (in press). [\[PubMed\]](#)
- ◆ Assareh H, Chen J, Ou L, Hollis SJ, Hillman K, Flabouris A 2014, 'Rate of venous thromboembolism among surgical patients in Australian hospitals: a multicenter retrospective cohort study.' *BMJ Open*, Oct;4(10):e005502. [\[PubMed\]](#)
- ◆ Assareh H, Ou L, Chen J, Hillman K, Flabouris A, Hollis SJ 2014, 'Geographic variation of failure-to-resuce in public acute hospitals in New South Wales, Australia.' *PLoS One*, Oct;9(10):e109807. [\[PubMed\]](#)





## ROYAL ADELAIDE HOSPITAL INTENSIVE CARE UNIT

- ◆ Blaser AR, Starkopf L, Deane AM, Poeze M, Starkopf J 2014, 'Comparison of different definitions of feeding intolerance: A retrospective observational study.' *Clinical Nutrition* (in press). [\[PubMed\]](#)
- ◆ Blaser AR, Starkopf J, Kirsimagi U, Deane AM 2014, 'Definition, prevalence, and outcome of feeding intolerance in intensive care: a systematic review and meta-analysis.' *Acta Anaesthesiologica Scandinavica*, Sep;58(8):914-22. [\[PubMed\]](#)
- ◆ Chen J, Ou L, Hillman K, Flabouris A, Bellomo R, Hollis SJ, Assareh H 2014, 'The impact of implementing a rapid response system: a comparison of cardiopulmonary arrests and mortality among four teaching hospitals in Australia.' *Resuscitation*, Sep;85(9):1275-81. [\[PubMed\]](#)
- ◆ Czapran A, Headdon W, Deane AM, Lange K, Chapman MJ, Heyland DK 2013, 'International observational study of nutritional support in mechanically ventilated patients following major burn injury.' *Burns* 2015 May;41(3):510-8. [\[PubMed\]](#)
- ◆ Deane AM 2014, 'Intensivists under threat: who's in charge here?' *Critical Care and Resuscitation*, Jun;16(2):138-9. [\[PubMed\]](#)
- ◆ Deane AM, Horowitz M 2014, 'Comment. Is incretin-based therapy ready for the care of hospitalized patients with type 2 diabetes?' *Diabetes Care*, Feb;37(2):e40-1. [\[PubMed\]](#)
- ◆ Deane AM, Jeppessen PB 2014, 'Understanding incretins.' *Intensive Care Medicine*, Nov;40(11):1751-4. [\[PubMed\]](#)
- ◆ Deane AM, Rayner CK, Keeshan A, Cvijanovic N, Marino Z, Nguyen NQ, Chia B, Summers MJ, Sim JA, van Beek, Chapman MJ, Horowitz M and Young RL 2014, 'The effects of critical illness on intestinal glucose sensing, transporters and absorption.' *Critical Care Medicine*, Jan;42(1):57-65. [\[PubMed\]](#)
- ◆ Dooney NM, Sundararajan K, Ramkumar T, Somogyi AA, Upton RN, Ong J, O'Connor SN, Chapman MJ, Ludbrook GI 2013, 'Pharmacokinetics of tramadol after subcutaneous administration in a critically ill population compared with a healthy cohort.' *BMC Anesthesiology* 2014, 14:33. [\[PubMed\]](#)
- ◆ Gungabissoon U, Hacquoil K, Bains C, Irizarry M, Dukes G, Williamson R, Deane AM, Heyland DK 2014, 'Prevalence, risk factors, clinical consequences, and treatment of enteral feed intolerance during critical illness.' *Journal of parenteral and enteral nutrition* (in press). [\[PubMed\]](#)
- ◆ \*Kar P, Jones KL, Horowitz M, Chapman MJ, Deane AM 2014, 'Measurement of gastric emptying in the critically ill.' *Clinical Nutrition* (in press). [\[PubMed\]](#)
- ◆ Nguyen NQ, Debreceni TL, Bambrick JE, Chia B, Wishart J, Deane AM, Rayner CK, Horowitz M, Young RL 2014, 'Accelerated intestinal glucose absorption in morbidly obese humans – relationship to glucose transporters, incretin hormones and glycaemia.' *Journal of Clinical Endocrinology and Metabolism* (in press). [\[PubMed\]](#)
- ◆ Nguyen NQ, Debreceni TL, Bambrick JE, Chia B, Deane AM, Wittert G, Rayner CK, Horowitz M, Young RL 2014, 'Upregulation of intestinal glucose transporters after Roux-en-Y gastric bypass to prevent carbohydrate malabsorption.' *Obesity*, Oct;22(10):2164-71. [\[PubMed\]](#)
- ◆ Ou L, Chen J, Assareh H, Hollis SJ, Hillman K, Flabouris A 2014, 'Trends and variations in the rates of hospital complications, failure-to-rescue and 30-day mortality in surgical patients in New South Wales, Australia, 2002-2009.' *PLoS One*, May;9(5):e96164. [\[PubMed\]](#)





## ROYAL ADELAIDE HOSPITAL INTENSIVE CARE UNIT

- ◆ Peake SL, Davies AR, Deane AM, Lange K, Moran JL, O'Connor SN, Ridley EJ, Williams PJ, Chapman MJ; for the TARGET investigators and the ANZICS CTG 2014, 'Use of a concentrated enteral nutrition solution to increase calorie delivery to critically ill patients: a randomized, double-blind, clinical trial.' *American Journal of Clinical Nutrition* (in press). [\[PubMed\]](#)
- ◆ Phillips LK, Deane AM, Jones KL, Rayner CK 2014, 'Gastric emptying and glycaemia in health and diabetes mellitus.' *Nature reviews: Endocrinology* (in press). [\[PubMed\]](#)
- ◆ \*Plummer MP, Bellomo R, Cousins CE, Annink CE, Sundararajan K, Reddi BA, Raj JP, Chapman MJ, Horowitz M, Deane AM 2014, 'Dysglycaemia in the critically ill and the interaction of chronic and acute glycaemia with mortality.' *Intensive Care Medicine*, Jul;40(7):973-80. [\[PubMed\]](#)
- ◆ \*Plummer MP, Blaser AR, Deane AM 2014, 'Stress ulceration: prevalence, pathology and association with adverse outcomes.' *Critical Care*, Mar;18(2):213. [\[PubMed\]](#)
- ◆ \*Plummer MP, Chapman MJ, Horowitz M, Deane AM 2014, 'Incretins and the intensivist: what are they and what does an intensivist need to know about them?' *Critical Care*, Feb;18(1):205. [\[PubMed\]](#)
- ◆ \*Plummer MP, Jones KJ, Annink CE, Cousins CE, Meier JJ, Chapman MJ, Horowitz M and Deane AM 2013, 'Glucagon-Like Peptide-1 attenuates the acceleration of gastric emptying induced by hypoglycemia in healthy subjects.' *Diabetes Care* (in press). [\[PubMed\]](#)
- ◆ Summers M, Di Bartolomeo A, Zaknic AV, Chapman MJ, Nguyen N, Zacharakis B, Rayner, C; Horowitz M, Deane, A 2013, 'Endogenous amylin and glucagon-like peptide-1 concentrations are not associated with the rate of gastric emptying in the critically ill.' *Acta Anaesthesiologica Scandinavica*, 58:235-242. [\[PubMed\]](#)
- ◆ Sundararajan K, Flabouris A, Keeshan A, Cramey T 2014, 'Documentation of limitation of medical therapy at the time of a rapid response team call.' *Australian Health Review*, May;38(2):218-22. [\[PubMed\]](#)
- ◆ Sundararajan K, Martin M, Rajagopola S, Chapman MJ 2014, 'Posttraumatic stress disorder in close Relatives of Intensive Care unit patients' Evaluation (PRICE) study.' *Australian Critical Care*, Nov;27(4):183-7. [\[PubMed\]](#)
- ◆ Sundararajan K, Wills S, Chacko B, Kanabar G, O'Connor S, Deane AM 2014, 'Impact of delirium and suture-less securement on accidental vascular catheter removal in the ICU.' *Anaesthesia and Intensive Care*, Jul;42(4):473-9. [\[PubMed\]](#)
- ◆ #Umapathysivam M, #Lee M, Jones K, Annink C, Cousins C, Trahair L, Rayner C, Chapman M, Nauck M, Horowitz M, Deane A 2013, 'Comparative effects of prolonged and intermittent stimulation of the glucagon-like peptide-1 receptor on gastric emptying and glycemia.' *Diabetes*, DB13-0893.R3. [\[PubMed\]](#)

### **2013**

- ◆ Burgstad CM, Besanko LK, Deane AM, Nguyen NQ, Saadat-Gilani K, Davidson G, Burt E, Thomas A, Holloway RH, Chapman MJ, and Fraser RJL 2013, 'Sucrose Malabsorption and Impaired Mucosal Integrity in Enterally Fed Critically Ill Patients: A Prospective Cohort Observational Study.' *Critical Care Medicine*, May;41(5):1221-1228. [\[PubMed\]](#)







## ROYAL ADELAIDE HOSPITAL INTENSIVE CARE UNIT

- ◆ Chalwin RP, Flabouris A 2014, 'Utility and assessment of non-technical skills for rapid response systems and medical emergency teams.' *Internal Medicine Journal*, Sep;43(9):962-9. [\[PubMed\]](#)
- ◆ Chapman MJ, Nguyen NQ, and Deane AM 2013, 'Gastrointestinal dysmotility - evidence and clinical management.' *Current Opinion in Nutrition and Metabolic Care*, Mar;16(2):209-216. [\[PubMed\]](#)
- ◆ Coventry C, Flabouris A, Sundararajan K, Cramey T 2013, 'Rapid Response Team calls to patients with a pre-existing Not for Resuscitation order.' Accepted by *Resuscitation*. [\[PubMed\]](#)
- ◆ Deane AM, Besanko LK, Burgstad CM, Chapman MJ, Horowitz M, and Fraser RJL 2013, 'Modulation of individual components of the gastric motor response to duodenal glucose.' *World J of Gastroenterol*, Sep;19(35):5863-9. [\[PubMed\]](#)
- ◆ Deane AM and Horowitz M 2013, 'Dysglycaemia in the critically ill - significance and management.' *Diabetes Obesity and Metabolism*, Sep;15(9):792-801. [\[PubMed\]](#)
- ◆ Deane AM and White MG 2013, 'Should hospitals have intensivist consultants in-house 24 hours a day? No.' *Medical Journal of Australia*, 198 (6): 309. [\[PubMed\]](#)
- ◆ Deane AM, Dhaliwal R, Day A, Ridley EJ, Davies AR and Heyland DK 2013, 'Comparisons between intragastric and small intestinal delivery of enteral nutrition: A systematic review and meta-analysis.' *Critical Care*, Jun 21;17(3):R125. [\[PubMed\]](#)
- ◆ Flabouris A, Jeyadoss J, Field J, Soulsby T 2013, 'Association between Emergency Department length of stay and outcome of patients admitted either to a Ward, the Intensive Care or a High Dependency Unit.' *Emerg Med Australas*, 2;25:46-54. [\[PubMed\]](#)
- ◆ #Lee MY, Fraser JD, Chapman MJ, Sundararajan K, #Umapathysivam MM, Summers MJ, Zaknic AV, Rayner CK, Meier JJ, Horowitz M, and Deane AM 2013, 'The effect of exogenous glucose-dependent insulintropic polypeptide in combination with glucagon-like peptide-1 on fasting and enteral nutrient stimulated glycaemia in critically ill patients: A randomized double-blind cross-over study.' *Diabetes Care*, Oct;36(10):3333-6. [\[PubMed\]](#)
- ◆ Nguyen N, Chapman MJ, Besanko LK, Burgstad CM, Deane AM, Bellon M, Lange K, Horowitz M, Holloway R, and Fraser RJL 2013, 'Gastric emptying measurement with the <sup>13</sup>C-octanoate breath test in critically ill patients: a comparison with scintigraphy.' *Intensive Care Med*, Jul;39(7):1238-46. [\[PubMed\]](#)
- ◆ \*Plummer MP, Meier JJ, Deane AM 2013, "The gut-brain axis in the critically ill: Is glucagon like peptide-1 protective in neurocritical care?" *Critical Care*, Jul;17(4):163. [\[PubMed\]](#)
- ◆ Reddi BA 2014, 'Why is saline so acidic (and does it really matter?)' *International Journal of Medical Sciences*, Apr;10(6):747-50. [\[PubMed\]](#)
- ◆ #Sim JA, Horowitz M, Summers MJ, Trahair LG, Goud RS, Zaknic AV, Hausken T, Fraser JD, Chapman MJ, Jones KL, and Deane AM 2013, 'Mesenteric blood flow, glucose absorption and blood pressure responses to small intestinal glucose in critically ill patients older than 65 years.' *Intensive Care Med*, Feb;39(2):258-66. [\[PubMed\]](#)
- ◆ Yuan KC, Yao ZR, Yu SZ, Dong ZX, Zhong YJ, Edwards JG, Edwards GD 2014, 'Prevalence and predictors of stress disorders following two earthquakes.' *International Journal of Social Psychiatry*, Sep;59(6):525-30. [\[PubMed\]](#)





# ROYAL ADELAIDE HOSPITAL INTENSIVE CARE UNIT

## 2012

- ◆ Deane AM, Wong GL, Horowitz M, Zaknic AV, Summers MJ, #Di Bartolomeo AE, #Sim JA, Maddox AF, Bellon MS, Rayner CK, Chapman MJ, and Fraser RJL Effect of erythromycin on small intestinal nutrient absorption and transit in critically ill patients, *Am J Clin Nut*, 95(6):1396-1402. [\[PubMed\]](#)
- ◆ #Di Bartolomeo AE, Chapman MJ, Zaknic AV, Summers MJ, Jones KL, Nguyen NQ, Rayner CK, Horowitz M and Deane AM Comparative effects on glucose absorption of intragastric and postpyloric nutrient delivery in the critically ill', *Critical Care*, 16(5):R167. [\[PubMed\]](#)
- ◆ Flabouris A, Jeyadoss J, Field J, Soulsby T. Direct and Delayed admission to Intensive Care or High Dependency following discharge from the Emergency Department: associated patient characteristics and hospital outcomes. *Critical Care and Resuscitation* 2012; 14; 191-197. [\[PubMed\]](#)
- ◆ Flabouris A, Hart GK, Nicholls A. Accessibility of the Australian Population to an Intensive Care Unit and Australian Intensive Care Units to each other. *Critical Care and Resuscitation* 2012; 14; 177-184. [\[PubMed\]](#)
- ◆ Krishnamurthy RB, Upton RN, Fajumi AO, Lai S, Charlton CS, Ousley RM, Martinez AM, McConnell H, O'Connor SN, Ong J, Macintyre PE, Chapman MJ and Ludbrook GL Pharmacokinetics of oxycodone after subcutaneous administration in a critically ill population compared with a healthy cohort. *Anaesthesia and Intensive Care* 40(2):269-274. [\[PubMed\]](#)
- ◆ Nguyen NQ, Besanko LK, Burgstad C, Bellon M, Holloway RH, Chapman M, Horowitz M, and Fraser RJ Delayed enteral feeding impairs intestinal carbohydrate absorption in critically ill patients. *Critical Care Medicine* 40(1):50-54. [\[PubMed\]](#)
- ◆ Sundararajan K, Sullivan T, and Chapman M Determinants of family satisfaction in the ICU, *Anaesthesia and Intensive Care* 40(1):159-165. [\[PubMed\]](#)

## 2011

- ◆ Bedford JR, Ivermee CL, Lange K, and Chapman MJ Nutrition and functional outcomes following critical illness due to H1N1 infection: a retrospective cohort study. *Critical Care and Resuscitation*, 13(4):226-231. [\[PubMed\]](#)
- ◆ Chapman MJ, Besanko LK, Burgstad CM, Fraser RJ, Bellon M, O'Connor S, Russo A, Jones KL, Lange K, Nguyen NQ, Bartholomeusz F, Chatterton B and Horowitz M Gastric emptying of a liquid nutrient meal in the critically ill: relationship between scintigraphic and carbon breath test measurement *Gut*, 60:1336-1343. [\[PubMed\]](#)
- ◆ Chapman MJ, Nguyen NQ, and Deane AM Gastrointestinal dysmotility: clinical consequences and management of the critically ill patient. *Gastroenterology Clinics of North America*, 40(4):725-39. [\[PubMed\]](#)
- ◆ Deane AM, Summers MJ, Zaknic AV, Chapman, MJ, Fraser, RJL, #Di Bartolomeo AE, Wishart JM and Horowitz M Exogenous glucagon-like peptide-1 attenuates the glycaemic response to postpyloric nutrient infusion in critically ill patients with type-2 diabetes *Critical Care*, 15(1):R35-36. [\[PubMed\]](#)
- ◆ Deane AM, Summers MJ, Zaknic AV, Chapman MJ, #Di Bartolomeo AE, Bellon M, Maddox A, Russo A, Horowitz M and Fraser RJ Glucose absorption and small intestinal transit in critical illness *Critical Care Medicine* 39(6):1282-1288. [\[PubMed\]](#)





## ROYAL ADELAIDE HOSPITAL INTENSIVE CARE UNIT

- ◆ Nguyen NQ, Grgurinovich N, Bryant LK, Burgstad CM, Chapman MJ, Holloway RH, Mangoni AA, and Fraser RJ Plasma erythromycin concentrations predict feeding outcomes in critically ill patients with feed intolerance. *Crit Care Med*, 39(4):868-871. [\[PubMed\]](#)
- ◆ Nguyen NQ, Besanko LK, Burgstad CM, Burnett J, Stanley B, Butler R, Holloway RH, and Fraser RJ Relationship between altered small intestinal motility and absorption after abdominal aortic aneurysm repair. *Intensive Care Med*, 37(4):610-8. [\[PubMed\]](#)
- ◆ Peake SL, Chapman MJ, O'Connor S, Ridley E, Williams P, Davies A and the Point Prevalence Survey Group Enteral nutrition in Australian and New Zealand Intensive Care Units: a point prevalence study of energy delivery practices. *Critical Care and Resuscitation*, 14(2):148-153. [\[PubMed\]](#)
- ◆ Peake SL, Ridley E, and Chapman M Energy goals in the critically ill adult. 2011 Yearbook of Intensive Care Medicine and Emergency Medicine. Vincent JL (Ed). Springer-Verlag Berlin Heidelberg.
- ◆ #Trinkle RM, Flabouris A 'Documenting Rapid Response System afferent limb failure and associated patient outcomes.' *Resuscitation*, 82(7):810-4. [\[PubMed\]](#)

### 2010

- ◆ Deane AM, Zaknic AV, Summers MJ, Chapman MJ, Lang K, Ritz M, Davidson G, Horowitz M, and RJJ Fraser Intrasubject variability of gastric emptying in the critically ill using a stable isotope breath test. *Clinical Nutrition*, 29:682-86
- ◆ Deane AM, Chapman MJ, Fraser RJJ, and Horowitz M Bench-to-bedside review: The gut as an endocrine organ in the critically ill. *Critical Care*, 14(5):228-233.
- ◆ Deane AM, Chapman MJ, and Horowitz M The therapeutic potential of a venomous lizard: The use of GLP-1 analogues in the critically ill. *Critical Care*, 14(5):1004-1006.
- ◆ Deane AM, Nguyen NQ, Steven JE, Fraser RJ, Holloway RH, Burgstad C, Besanko LK, Jones KL, Rayner CK, Chapman MJ, and Horowitz M Endogenous glucagon-like peptide-1 slows gastric emptying in healthy subjects attenuating postprandial glycaemia. *Journal of Clinical Endocrinology and Metabolism*, 95(1):215-221.
- ◆ Deane AM, Chapman MJ, Fraser RJJ, Summers MJ, Zaknic AV, Storey JP, Jones KL, Rayner CK, Horowitz M 2010, 'Effects of exogenous glucagon-like peptide-1 on gastric emptying and glucose absorption in the critically ill – relationship to glycaemia', *Critical Care Medicine*, 38(5):1261-9.
- ◆ Ho J, Chapman M, O'Connor S, Lam S, Edwards J, Ludbrook G, Lewis J, and Torpy D Characteristics of plasma Nox in severe sepsis: higher interindividual variability and correlation with illness severity, but lack of correlation with cortisol levels *Clinical Endocrinology*, 73(3):413-420.
- ◆ Rai SS, O'Connor SN, Lange K, Rivett J, and Chapman MJ Enteral nutrition in septic shock - a retrospective cohort study *Critical Care & Resus*, 12:177-181





## ROYAL ADELAIDE HOSPITAL INTENSIVE CARE UNIT

- ◆ Rangappa P, Jeyadoss J, Flabouris A, Clark JM, and Marshall R Cardiac pacing in patients with a cervical spinal cord injury. *Spinal Cord*, 48(12):867-71.

### 2009

- ◆ Chapman MJ, Fraser RJ, Matthews G, Russo A, Bellon M, Besanko LK, Jones KL, Butler R, Chatterton B, and Horowitz M 2009 Glucose absorption and gastric emptying in critical illness *Crit Care*, 13(4):R140.
- ◆ Deane AM, Fraser RJL, Young R, O'Connor S, Foreman B and Chapman MJ Evaluation of a bedside technique for the post-pyloric placement of feeding catheters *Critical Care and Resuscitation*, 11(3):180-183.
- ◆ Deane AM, Chapman MJ, Fraser RJL, Burgstad CM, Besanko LK, and Horowitz M The effect of exogenous glucagon-like peptide-1 on the glycaemic response to small intestinal nutrient in the critically ill: a randomised double-blind placebo-controlled cross over study, *Critical Care*, 3(3):67.
- ◆ Deane AM, Fraser RJ and Chapman MJ Prokinetic drugs for feed intolerance in critical illness: current and potential therapies, *Critical Care and Resuscitation*, 11(2):132-143.
- ◆ Galluccio ST, Chapman MJ and Finnis ME Femoral-radial arterial pressure gradients in critically ill patients, *Crit Care Resusc*, 11(1):34-8.

### 2008

- ◆ Chapman MJ, Fraser RJ, Bryant L, Vozzo R, Nguyen N, Tam W, Zacharachis B, Davidson G, Butler R, Horowitz M 2008, 'Gastric emptying and the organization of antro-duodenal pressures in the critically ill.' *Neurogastroenterology & Motility*, 20(1):27-35.
- ◆ Cretikos MA, Bellomo R, Hillman K, Chen J, Finfer S, and Flabouris A Respiratory rate: the neglected vital sign *Medical Journal of Australia*, 188(11):657-9.
- ◆ Flabouris A, Hart GK, George C 2008, 'Outcomes of patients admitted to tertiary intensive care units after interhospital transfer: comparison with patients admitted from emergency departments', *Critical Care and Resuscitation*, 10(2):97-105.
- ◆ Flabouris A, Hart GK, George C 2008, 'Observational study of patients admitted to intensive care units in Australia and New Zealand after interhospital transfer', *Critical Care and Resuscitation*, 10(2):90-6.
- ◆ Galluccio ST, Flabouris A, Griggs WM Resuscitation from prolonged cardiac arrest in a blunt trauma patient: seeking guidance through the guidelines. *Injury*, 39(7):805-8.
- ◆ Nguyen NQ, Fraser RJ, Bryant LK, Chapman MJ, and Holloway RH Diminished functional association between proximal and distal gastric motility in critically ill patients. *Intensive Care Medicine*, 34(7):1246-55.
- ◆ Nguyen NQ, Bryant LJ, Fraser RJ, Burgstad C, Burnett J, Butler RN, Holloway RH 2008, 'Interaction Between Small Intestinal Motility and Absorption Following Major Abdominal Surgery.' *Gastroenterology*, 134(4):A-403.
- ◆ Nguyen NQ, Chapman MJ, Fraser RJ, Bryant LK, Burgstad C, Ching K, Bellon M and Holloway RH The effects of sedation on gastric emptying and intra-gastric meal distribution in critical illness *Intensive Care Medicine*, 34(3):454-60.





## ROYAL ADELAIDE HOSPITAL INTENSIVE CARE UNIT

- ◆ Nguyen NQ, Fraser RJ, Bryant LK, Burgstad C, Chapman MJ, Bellon M, Wishart J, Holloway RH, and Horowitz M The impact of delaying enteral feeding on gastric emptying, plasma cholecystokinin, and peptide YY concentrations in critically ill patients.' *Critical Care Medicine*, 36(5):1469-74.
- ◆ Nguyen NQ, Ching K, Fraser RJ, Chapman MJ, and Holloway RH Risk of Clostridium difficile diarrhoea in critically ill patients treated with erythromycin-based prokinetic therapy for food intolerance *Intensive Care Medicine*, 34(1):169-73.

### 2007

- ◆ Chapman MJ, Nguyen NQ, and Fraser RJ, 'Gastrointestinal motility and prokinetics in the critically ill.' *Current Opinion in Critical Care*, 13(2):187-94.
- ◆ Deane A, Chapman MJ, Fraser RJ, Bryant LK, Burgstad C and Nguyen NQ. Mechanisms underlying feed intolerance in the critically ill: implications for treatment *World Journal of Gastroenterology*, 13(29):3909-17.
- ◆ Hockley S, Hamilton V, Young RJ, Chapman MJ, Taylor J, Creed S, Chorley D, Williams D, and Tippet M Efficacy of the CathRite system to guide bedside placement of peripherally inserted central venous catheters in critically ill patients: a pilot study. *Critical Care Resuscitation*, 9(3):251-255.
- ◆ Lam SW, Nguyen NQ, Ching K, Chapman MJ, Fraser RJ, and Holloway RH Gastric feed intolerance is not increased in critically ill patients with type II diabetes mellitus. *Intensive Care Medicine*, 33(10):1740-5.
- ◆ Nguyen NQ, Chapman MJ, Fraser RJ, Bryant LK, Burgstad C, and Holloway RH Prokinetic therapy for feed intolerance in critical illness: one drug or two? *Critical Care Medicine*, 35(11):2561-7.
- ◆ Nguyen NQ, Ng MP, Chapman MJ, Fraser RJ, and Holloway RH The impact of admission diagnosis on gastric emptying in critically ill patients – a retrospective study. *Critical Care*, 8;11(1):R16.
- ◆ Nguyen NQ, Ching K, Fraser RJ, Chapman MJ, and Holloway RH The relationship between blood glucose control and intolerance to enteral feeding during critical illness. *Intensive Care Medicine*, 13(29):2085-92.
- ◆ Nguyen NQ, Fraser RJ, Bryant LK, Chapman MJ, Holloway RH, and Feinle-Bisset C Proximal gastric motility in critically ill patients with type 2 diabetes mellitus *World Journal of Gastroenterology*, 14;13(2):270-275.
- ◆ Nguyen NQ, Mangoni AA, Fraser RJ, Chapman MJ, Bryant L, Burgstad C, and Holloway RH Prokinetic therapy with erythromycin has no significant impact on blood pressure and heart rate in critically ill patients. *British Journal of Clinical Pharmacology*, 63(4):498–500.
- ◆ Nguyen NQ, Chapman MJ, Fraser RJ, Bryant L, and Holloway RH Erythromycin is more effective than metoclopramide in the treatment of feed intolerance in critical illness. *Critical Care Medicine*, 35 (2):283-489.
- ◆ Nguyen NQ, Fraser RJ, Chapman MJ, Bryant L, Holloway RH, Vozzo R, Wishart J, Feinle-Bisset C, and Horowitz M Feed Intolerance in the Critically Ill is Associated with Increased Plasma Cholecystokinin Concentrations.' *Critical Care Medicine*, 35(1):82-88.





## ROYAL ADELAIDE HOSPITAL INTENSIVE CARE UNIT

- ◆ Nguyen NQ, Fraser RJ, Bryant LK, Chapman MJ, Wishart J, Holloway RH, Butler R, and Horowitz M 'The relationship between gastric emptying, plasma cholecystokinin, and peptide YY in critically ill patients.' *Critical Care*, 11(6):R132.

### 2006

- ◆ Ho JT, Al-Musalhi H, Chapman MJ, Quach T, Thomas PD, Bagley CJ, Lewis JG, Torpy DJ 2006, 'Septic shock and sepsis: a comparison of total and free plasma cortisol levels.' *Journal of Clinical Endocrinology & Metabolism*, 91(1):105-14.
- ◆ Nguyen NQ, Fraser RJ, Chapman MJ, Bryant LK, Wishart J, Holloway RH, Horowitz M 2006, 'Fasting and nutrient-stimulated plasma peptide-YY levels are elevated in critical illness and associated with feed intolerance: a randomized controlled trial.' *Critical Care Medicine*, 10(6):R 175.
- ◆ Nguyen N, Chapman MJ, Fraser RJ, Ritz MA, Bryant L, Butler R, Davidson G, Zacharakis B, Holloway RH 2006, 'Longstanding Type II Diabetes Mellitus is not a risk factor for slow Gastric Emptying in Critically Ill Patients.' *Intensive Care Med*, 32(9):1365-70.
- ◆ Maiden MJ, White J 2006, 'Severe rapid-onset paralysis in a part-time soldier.' *Critical Care & Resuscitation*, 8(2):120-122.
- ◆ Nguyen NQ, Fraser RJ, Chapman MJ, Bryant L, Holloway RH, Vozzo R, Feinle-Bisset C 2006, 'Proximal gastric response to small intestinal nutrients is abnormal in mechanically ventilated critically ill patients.' *The World Journal of Gastroenterology*, 12(27):4383-4388.
- ◆ Venkatesh B, Prins J, Torpy D, Chapman MJ, Joyce C, Cooper DJ, Cohen J, Hickman I, Jones D, Higgins A 2006, 'Relative adrenal insufficiency in sepsis: match point or deuce?' *Critical Care Resuscitation*, 8(4):376-80.

### 2005

- ◆ Bacon AK, Paix AD, Williamson JA, Webb RK, Chapman MJ 2005, 'Crisis management during anaesthesia: pneumothorax.' *Quality & Safety in Health Care*, 14(3):e18.
- ◆ Chapman MJ, Myburgh JA, Kluger MT, Runciman WB 2005 'Crisis management during anaesthesia: pulmonary oedema.' *Quality & Safety in Health Care*, 14(3):e8.
- ◆ Chapman MJ, Fraser R, Vozzo R, Bryant L, Tam W, Nguyen N, Zacharakis B, Davidson G, Butler R, Horowitz M 2005, 'Antro-pyloro-duodenal motor responses to gastric and duodenal nutrient in critically ill patients.' *Gut*, 54(10):1384-90.
- ◆ Myburgh JA, Chapman MJ, Szekely SM, Osborne GA 2005, 'Crisis management during anaesthesia: sepsis' *Quality & Safety in Health Care*, 14(3):e22.
- ◆ Nind G, Chen W-H, Protheroe R, Iwakiri K, Fraser RJ, Young R, Chapman M, Nguyen N, Sifrim D, Rigda R, Holloway RH 2005, 'Mechanisms of Gastroesophageal Reflux in Critically Ill Mechanically Ventilated Patients.' *Gastroenterology*, 128:600-606.
- ◆ Paix AD, Runciman WB, Horan BF, Chapman MJ, Currie M 2005, 'Crisis management during anaesthesia: hypertension.' *Quality & Safety in Health Care*, 14(3):e12.





## ROYAL ADELAIDE HOSPITAL INTENSIVE CARE UNIT

- ◆ Ritz MA, Chapman MJ, Finnis ME, Butler RN, Butler RN, Cmielewski P, Davidson GP, Rea D, Fraser RL 2005, 'Erythromycin dose of 70mg accelerates gastric emptying as effectively as 200mg in the critically ill.' *Intensive Care Medicine*, 31(7):949-54.
- ◆ Young RJ, Chapman MJ, Fraser RJ, Chorley D, Creed S 2005, 'A novel technique for nasoduodenal feeding tube placement in critically ill patients.' *Anaesthesia and Intensive Care*, 33(2):229-34.

### 2004

- ◆ Flabouris A, Nocera A, Garner A 2004, 'Efficacy of critical incident monitoring for evaluating disaster medical readiness and response during the Sydney 2000 Olympic Games.' *Prehospital Disaster Medicine*, 19(2):164-8.
- ◆ Henning J, Sharley PH, Young RJ 2004, 'Pressures within air filled tracheal cuffs at altitude - an in vivo study.' *Anaesthesia*, 59:252-4.

### 2003

- ◆ Ali R, White J, Thomas PD, Gowing L, McGregor C 2003, 'Antagonist – precipitated heroin withdrawal under anaesthetic prior to maintenance naltrexone treatment: determinants of withdrawal severity.' *The Drug and Alcohol Review*.
- ◆ Beckman U, Bohringer C, Carless R, Gillies DM, Runciman WB, Wu AW, Pronovost P 2003, 'Evaluation of two methods for quality improvement in intensive care: Facilitated incident monitoring and retrospective medical chart review.' *Critical Care Medicine*, Vol 31, No 4, pp1006-1011.
- ◆ Caldicott D, Edwards NA et al 2003, 'Dancing with 'death': p-methoxyamphetamine overdose and its acute management.' *Journal of Toxicology*, 41(2):143-154.
- ◆ Caldicott D, Edwards NA 2003, 'Medical preparation for terrorism in Australia. Is luck running out for 'The Lucky Country?'' *Prehospital Disaster Medicine*, 18(2):57-65.
- ◆ Chapman MJ, Fraser RJ, De Beaux I, Creed S, Finnis M, Butler R, Cmielewski P, Zacharkis B, Davidson G 2003, 'Cefazolin Does Not Accelerate Gastric Emptying In The Critically Ill.' *Intensive Care Medicine*, 29:(7)1169-1172.
- ◆ Edwards NA, Caldicott D 2003, 'Are we ready for this?' *The Diplomat*, 2003 April-May: pp10-12.
- ◆ Edwards NA, Caldicott D 2003 'Editorial: Illicit drugs- the dark before an Australian DAWN?' *Critical Care and Resuscitation*, 5:248-250.
- ◆ Flabouris A, Schoettker P, Garner A 2003, 'ARDS with severe hypoxia-aeromedical transportation during prone ventilation.' *Anaesthesia and Intensive Care*, (6):675-8.
- ◆ Flabouris, A 2003, 'A description of events associated with scene response by helicopter based medical retrieval teams.' *Injury*, 34(11):847-52.
- ◆ Runciman WB, Merry AF, Tito F 2003, 'Error, Blame, and the Law in Health Care—An Antipodean Perspective.' *Ann Intern Med*. 2003;138:974-979.
- ◆ Runciman WB & Merry A 2003, 'A tragic death: a time to blame or a time to learn?' *Qual. Saf. Health Care* 2003;12;321-322.





## ROYAL ADELAIDE HOSPITAL INTENSIVE CARE UNIT

- ◆ Runciman WB, Roughead EE, Semple SJ, & Adams RJ 2003, 'Adverse drug events and medication errors in Australia.' *International Journal for Quality in Health Care*, Volume 15, Supplement 1: pp. i49-i59.
- ◆ Sanap M, Chapman MJ, Pain R 2003 'Severe Ethanol Poisoning Treated with Rapid Resuscitation and Renal Replacement Therapy: A Case Report.' *Critical Care and Resuscitation*, 5: 20-23.
- ◆ Tran MD, Garner AA, Morrison I, Sharley PH, Griggs WM & Xavier C 2003, 'The Bali bombing: civilian aeromedical evacuation.' *MJA* 2003; 179 (7): 353-356
- ◆ Trevithick S, Flabouris A, Tall G, Webber CF 2003, 'International EMS systems: New South Wales, Australia.' *Resuscitation*, 59(2):165-70.
- ◆ Young RJ, King A 2003, 'Legal Aspects of Withdrawal of Therapy.' *Anaesthesia & Intensive Care*, 31: 501-508.

### **2002**

- ◆ Caldicott DG, Edwards N 2002, 'The eyes have it – an uncommon but useful sign following serious craniocervical trauma.' *Journal of Trauma*, 53(5):1001-1005.
- ◆ Caldicott DGE, Edwards NA 2002, 'The global threat of terrorism and its impact on Australia.' *Emergency Medicine (Frem)*, 14:218-229.
- ◆ Caldicott DGE, Edwards NA 2002, 'The tools of the trade: Weapons of mass destruction.' *Emergency Medicine (Frem)*, 14:240-248.
- ◆ Caldicott DGE, Edwards NA, Tingey D, Bonnin R 2002, 'Medical response to a terrorist attack and weapons of mass destruction.' *Emergency Medicine (Frem)*, 14:230-239.
- ◆ Caldicott D, Isbister GK, Edwards NA 2002, 'Publication and patriotism.' *ANZ Journal of Surgery*, Oct;72(10):768.
- ◆ Caldicott D, Parasivam S, Harding J, Edwards N, Bochner F 2002, 'Tenecteplase for massive pulmonary embolus.' *Resuscitation*, 55(2):211-213.
- ◆ French CJ, Bellomo R, Finfer SR, Lipman J, Chapman MJ, Boyce NW 2002, 'Appropriateness of red blood cell transfusion in Australasian intensive care practice.' *Medical Journal of Australia*, 177(10):548-51.
- ◆ Gelling L, Fitzgerald M, Blight I 2002, 'Hope in the ICU: a qualitative study exploring nurses' experiences of the concept of hope.' *Nursing in Critical Care*, 7 (6):271-277.
- ◆ Sugrue M, Bauman A, Jones F, Bishop G, Flabouris A, Parr M, Stewart A, Hillman K, Deane SA 2002, 'Clinical examination is an inaccurate predictor of intraabdominal pressure.' *World Journal of Surgery*, 26(12):1428-31.
- ◆ Young RJ 2003, 'Book Review: Three Patients: International Perspectives on Intensive Care at the End of Life.' *Anaesthesia & Intensive Care*.
- ◆ Young RJ, King A 2002, 'Consent for the critically ill patient.' *Critical Care and Resuscitation*, 2002,4:12-13.

### **2001**

- ◆ Caldicott E 2001, 'Traumatic Brain Injury after a motor vehicle accident: fact or 'fantasy'?' *Emergency Medicine Journal*, 18(6):458-9.







## ROYAL ADELAIDE HOSPITAL INTENSIVE CARE UNIT

- ◆ De Beaux I, Chapman MJ, Fraser RJ, Finnis M, De Keulenaer B, Liberalli D, Satanek M 2001, 'Enteral nutrition in the critically ill: A prospective survey in an Australian intensive care unit.' *Anaesthesia & Intensive Care*, 29 (6):619-622.
- ◆ Flabouris A 2001, 'Clinical features, patterns of referral and out of hospital transport events for patients with suspected isolated spinal injury.' *Injury*, 32(7):569-75.
- ◆ Hillman K, Parr M, Flabouris A, Bishop G, Stewart A 2001, 'Teleo in-hospital resuscitation: the concept of the medical emergency team.' *Resuscitation*, 48(2):105-10.
- ◆ Joynt GM, Lipman J, Gomersall CD, Young RJ, Wong EL, Gin T 2001, 'The Pharmacokinetics of once-daily dosing of ceftriaxone in critically ill patients.' *J Antimicrob Chemother*, 47(4):421-9.
- ◆ Parr MJ, Hadfield JH, Flabouris A, Bishop G, Hillman K 2001, 'The Medical Emergency Team: 12 month analysis of reasons for activation, immediate outcome and not-for-resuscitation orders.' *Resuscitation*, 50(1):39-44.
- ◆ Ritz MA, Fraser R, Edwards N, Di Matteo AC, Chapman MJ, Butler R, Cmielewski P, Tournadre JP, Davidson G, Dent J 2001, 'Delayed gastric emptying in ventilated critically ill patients: measurement by <sup>13</sup> C-octanoic acid breath test.' *Critical Care Medicine*, 29(9):1744-9.
- ◆ Thomas PD 2000, 'The differential diagnosis of fixed dilated pupils: a case report and review.' *Critical Care and Resuscitation*, 211, 34-37.
- ◆ Tournadre J-P, Barclay M, Fraser RJ, Dent J, Young RJ, Berce M, Jury P, Fergusson L, Burnett J 2001, 'Small intestinal motor patterns in critically ill patients following major abdominal surgery.' *American Journal of Gastroenterology*, 96:2418-26.
- ◆ Young RJ 2001, 'Futility - beyond a definition.' *Critical Care and Resuscitation*, 3:10-11.
- ◆ Young RJ, Worswick D, Stoffel B 2001, 'Complementary Medicine in Intensive Care: Ethical and Legal Perspectives.' *Anaesthesia & Intensive Care*, 29:227-238.

### 2000

- ◆ Bellomo R, Chapman MJ, Finfer S, Hickling K, Myburgh J 2000, 'Low-dose dopamine in patients with early renal dysfunction: a placebo-controlled randomised trial.' *Lancet*, 356(9248):2139-43.
- ◆ Chapman MJ, Fraser RJ, Kluger MT, Buist MD, De Nichilo DJ 2000, 'Erythromycin improves gastric emptying in critically ill patients intolerant of nasogastric feeding.' *Critical Care Medicine*, Volume 28, Number 7, pages 2334-2337.
- ◆ Flabouris A, Bishop G, Williams L, Cunningham M 2000, 'Routine blood test ordering for patients in intensive care.' *Anaesthesia and Intensive Care*, 28(5):562-5.
- ◆ Fletcher SJ, Flabouris A 2000, 'The patient-at-risk team.' *Anaesthesia*, 55(2):198.
- ◆ Myburgh JA & Lewis SB 2000, 'Mannitol for resuscitation in acute head injury: effects on cerebral perfusion and osmolality.' *Critical Care and Resuscitation*, Volume 2, pp 344-353.
- ◆ Rice AJ, Scroop GC, Thornton AT, Mc Naughton NS, Rogers KJ, Chapman MJ, Greville HW, Scicchitano R, Gore CJ 2000, 'Arterial hypoxaemia in endurance athletes is greater





## ROYAL ADELAIDE HOSPITAL INTENSIVE CARE UNIT

during running than cycling.' *Respiration Physiology*, 123(3):235-46.

### 1999

- ◆ Chapman MJ, Peake S, Webb AR, Shapiro MJ, Singer M, Suter PM 1999, 'Drug-induced depression of immunity.' *Oxford textbook of Critical Care*, Oxford Medical Publications, Oxford University Press, Ch 13.4.1, pp894-898.
- ◆ Douglas WE, Flabouris A 1999, 'Surgical emphysema following percutaneous tracheostomy.' *Anaesthesia and Intensive Care*, 27(1):69-72.
- ◆ Flabouris A & Myburgh JA 1999, 'The utility of open lung biopsy in patients requiring mechanical ventilation.' *Chest*, Volume 115, pp811-817.
- ◆ Flabouris A 1999, 'Patient referral and transportation to a regional tertiary ICU: patient demographics, severity of illness and outcome comparison with non-transported patients.' *Anaesthesia and Intensive Care*, 27(4):385-90.
- ◆ Gilligan JE, Webb AR, Shapiro MJ, Singer M, Suter PM 1999, 'Minimizing risk during transport.' *Oxford textbook of Critical Care*, Oxford Medical Publications, Oxford University Press, Ch 11.12.2, pp823-827.
- ◆ Gilligan JE, Griggs WM, Jelly MT, Morris DG, Haslam RR, Matthews NT, Everest ER, Bryce RR, Marshall PB & Peisach, RA 1999, 'Mobile intensive care services in rural South Australia.' *Medical Journal of Australia*, Volume 171, pp617-620.
- ◆ Lipman J, Gomersall CD, Gin T, Joynt GM, Young RJ 1999, 'Continuous infusion ceftazidime in intensive care: a randomized controlled trial.' *J Antimicrob Chemother*, 47(4):421-9.
- ◆ Myburgh JA 1999, 'An appraisal of the impact of management guidelines in traumatic brain injury.' *Critical Care and Resuscitation*, Volume 1, pp 55-62.
- ◆ Rice AJ, Scroop GC, Thornton AT, McNaughton NS, Rogers KJ, Chapman MJ, Greville HW, Scicchitano R, Gore CJ 1999, 'Exercise-induced hypoxaemia in highly trained cyclists at 40% peak oxygen intake.' *European Journal of Applied Physiology*, 79:353-359.

### 1998

- ◆ Chapman MJ, Peake S 1998 'The pathophysiology and management of drug induced immune dysfunction in the critically ill caused by therapeutic and recreational drugs.' *Oxford Handbook of Intensive Care*.
- ◆ Drew PA, Smith E, Thomas PD 1998, 'Fat distribution and changes in the blood brain barrier in a rat model of arterial fat embolism' *Journal of Neurological Science*, 156, 138-143.
- ◆ Gould TH, Buist MD, Meredith D, Thomas PD 1998, 'Fulminant desquamative interstitial pneumonitis' *Anaesthetic Intensive Care*, 26:6, 677-679.

